

Xchange²

Your Detecting Connection

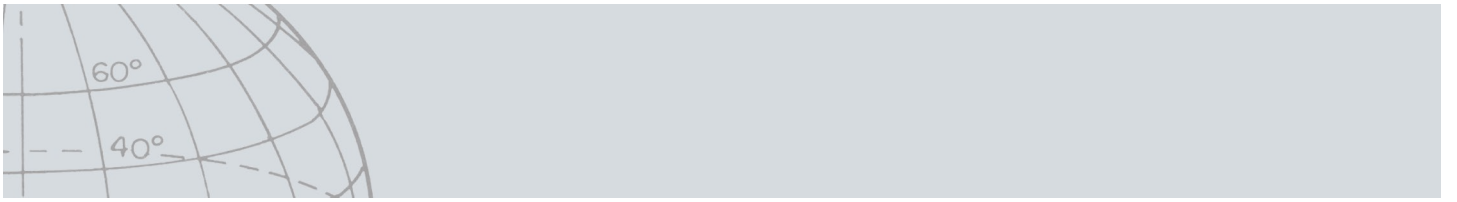


User Manual

support@xchange2.net

World's Best Metal Detection Technologies





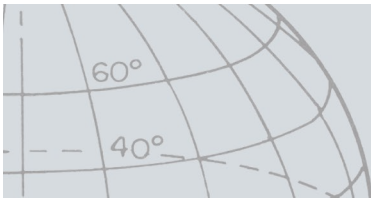
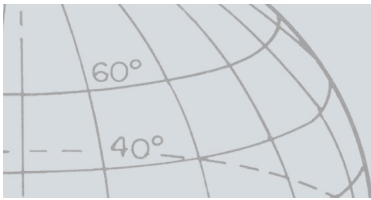


Table of Contents

Contents

Installation	4
XChange 2 Terms and Conditions	4
Setting User Preferences	5
XChange 2 Overview	6
Detector Items	7
Collections	8
Collection Controls	8
User Collections	8
System Collections.....	9
Detector.....	9
All.....	9
File	9
Recycle	9
GeoHunt.....	9
Item List.....	10
Item Summary.....	10
Selecting/Deselecting items	10
Moving/Copying/Deleting items	10
Edit Items.....	11
List Summary	11
Sort Items	11
Filter Items (Search Bar).....	11
Filter Items Advanced	11
Using XChange 2	13
Logging In	13
Connecting your Detector	14
Collections.....	15
Creating a Collection	15
Editing a Collection	15
GeoHunt.....	16
Creating a GeoHunt	16
Editing a GeoHunt	16
WayPoint.....	17
Creating a WayPoint.....	17
Editing a WayPoint	18
FindPoint	19
Editing a FindPoint.....	19
Detector Settings	20
Editing Detector Settings	20
User Mode (CTX 3030 only).....	21
Creating a User Mode	21
Editing a User Mode	21
Software Updates	23



Installation

Installation

To successfully install XChange 2 your computer will require the following operating system: Windows XP, Windows Vista, Windows 7, or Windows 8.

In order to use all the features of the application you must also have:

- A Minelab CTX 3030 or GPZ 7000 detector
- USB cable to connect your detector
- An active minelab.com account
- An internet connection

To install the XChange 2 application, insert the XChange 2 installation CD into your computer and follow the menu prompts.

If you do not have the installation CD, the XChange 2 application can be downloaded from www.minelab.com.

XChange 2 Terms and Conditions

The first time the XChange 2 application is installed the Terms and Conditions of use will be displayed.

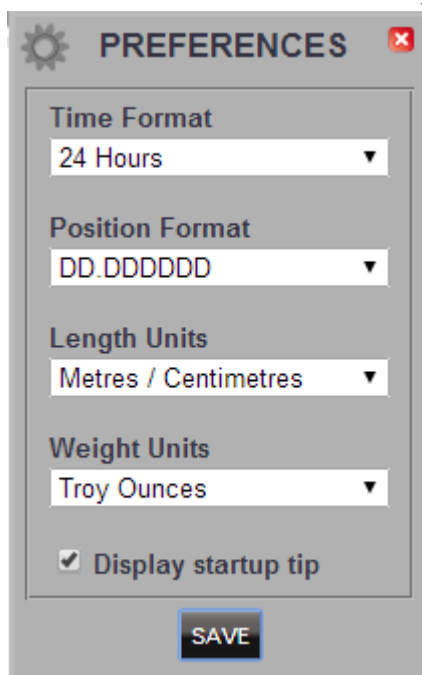
You will be required to read and accept the Terms & Conditions of use in order to continue with the installation process.

Setting User Preferences

Setting User Preferences

When you install the XChange 2 application you will be required to set your User Preferences.

1. Set options for 'Time', 'Position', 'Length Units' and 'Weight Units'
2. Click on the 'SAVE' button to save your preferences.



Changes to your User Preferences can be made within XChange 2 using the 'Settings' tab.

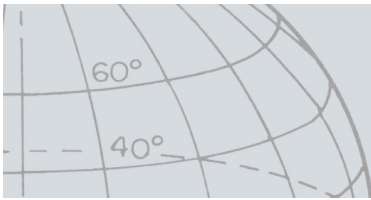
XChange 2 Overview

XChange 2 Overview

This section provides an overview of the XChange 2 application and key areas of use.

The screenshot shows the XChange 2 application window. The interface is divided into several sections, each labeled with a red box and a text label:

- Header:** The top bar contains the Minelab logo, the XChange 2 logo, and the text "Your Detecting Connection". On the right, there is a language selection pane and a version number "Version 1.6.7-1.1.14".
- Collection Controls:** A sidebar on the left contains icons for "ALL", "FILE", "RECYCLE", "SAMPLES", "GRZ SAMPLES", "GOLD", and "TREASURE".
- Item Controls:** A central panel shows a list of items with columns for "DETECTOR", "FILTER", and "SORT". The "FILTER" column has a dropdown menu with "ALL", "CTX 3030", and "GPZ 7000". The "SORT" column has a dropdown menu with "Date" and "ALL NONE".
- Special Collections:** A list of items is displayed, including "GPZ 7000", "High Trash", "Beach", "Relics", "Silver", "Coins", "Universal Settings", and "Minelab - Australia".
- User Collections:** A list of items is displayed, including "GPZ 7000", "High Trash", "Beach", "Relics", "Silver", "Coins", "Universal Settings", and "Minelab - Australia".
- Item Box:** A box containing a "LOGIN" button and links for "Not Registered? Click here to create an account" and "Forgotten Password? Click here".
- Item Summary:** A box containing a "Log in section" link.
- Item List:** A list of items is displayed, including "GPZ 7000", "High Trash", "Beach", "Relics", "Silver", "Coins", "Universal Settings", and "Minelab - Australia".
- Settings pane:** A pane on the right side of the application window.
- Language pane:** A pane on the right side of the application window.
- Version number:** A pane on the right side of the application window.



Detector Items

Detector Items

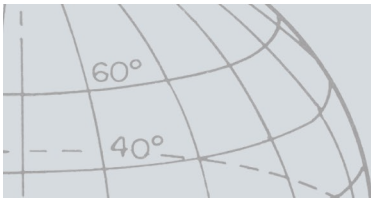
Detector items are elements that can be copied to and from the detector.

Detector items include:

- Universal Settings (*page 13*)
- User Modes – *CTX 3030 only* (*page 21*)
- WayPoints (*page 17*)
- FindPoints (*page 18*)
- GeoHunts (*page 15*)

Please note that detector items created in one model of detector cannot be transferred to another model, with the exception of WayPoints.

For more information about these items, refer to the relevant pages in this manual.



Collections

Collections

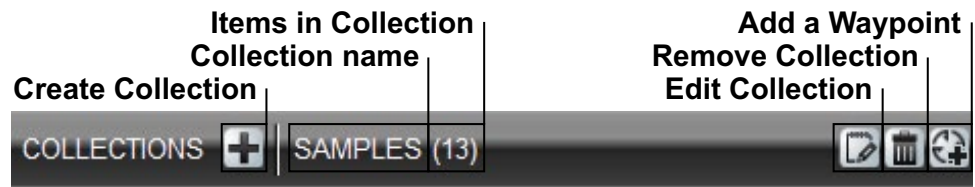
Collections are at the heart of the XChange 2 application. All items copied from the detector must reside in a collection. In fact, the detector itself is a special collection within the application. This allows items to be copied to and from the detector in the same way that items are moved from one collection to another.

Collections are groups of items similar to the folders on your computer, the main difference being that collections cannot contain other collections. Items can be moved around from one collection to another in order to collate them into appropriate categories.

Collections that you create should be given a name, and allocated an icon.

Collection Controls

The collection controls perform the actions required to use and manipulate the collections.



User Collections



In order to move items into the application you need to create a User Collection. Once created, you may drag items from any collection to any User Collection.

You can create as many collections as you wish.

Collections

System Collections



System collections are special collections that provide specialist features for the application.

The available system collections are:

- Detector (e.g. CTX 3030)
- All
- File
- Recycle
- GeoHunt

Detector

When your detector is connected to your computer the 'Detector Collection' appears with the detector's name next to the detector icon.

Click on the 'Detector Collection' to see the contents of the detector.

All

'All' displays all items in all user collections. This collection is useful if you do not know the location of the items you are seeking.

The Search and Sort functions provide filters for viewing collection items (*see page 11*).

File

'File' is a collection to which items can be copied and then exported to an alternate file for backup or sharing purposes. A previously saved 'File' can also be opened and items viewed and copied to other collections. In other words, 'File' provides an export/import feature.

'File' is a special Minelab format that can only be read and written by the XChange 2 application.

Recycle

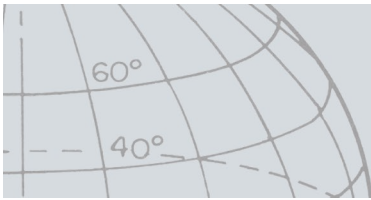
'Recycle' holds items that have been deleted from user collections. This provides a way to recover a deleted item until the 'Recycle' is emptied.

Any items that are dragged into 'Recycle' from the detector or the transfer file will be automatically deleted, and therefore will not be recoverable.

'Recycle' may be cleared using the Empty Trash icon 

GeoHunt

A GeoHunt contains all the items created while a GeoHunt was in progress, as well as the detector Mode in use at the time.



Collections

A GeoHunt records the detector Mode that was active when the GeoHunt was started, and displays a position trail of detector movements during the GeoHunt. The GeoHunt also contains any FindPoints and WayPoints while the GeoHunt was active.

Since these items may be moved to different user collections, the GeoHunt system collection allows you to view all the items associated with a GeoHunt in a single collection. It doesn't move the items from their various user collections, it just temporarily creates a special collection containing all the GeoHunt items.





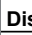
This system collection only appears when the 'Show GeoHunt' icon is selected in the Item Summary of any item that is part of a GeoHunt (*page 10*).

Item List

The Item List shows a summary of each item in the selected collection. These can be from any collection, including the System Collections.

Item Summary

The Item Summary contains a summary of the information for the item. The following figure shows the item summary for a GeoHunt:

	Descriptive text	Edit Item
	Time stamp	Center on map
	Item name	Show Geohunt
Item collection icon		
Item icon	Feb 28 2012 8:31:45 PM for 0h 19m	 5.8 km
Attachment icon	 Henley Beach, South Australia	

Selecting/Deselecting items

To select or deselect an item simply left click on the Item Summary. Multiple items can be selected by clicking on each Item Summary individually. When an item is selected the summary background will change color.

You can also select all the items by clicking on the ALL button at the top of the item list.

When an item is deselected the background will change back to white.

You can deselect everything by clicking on the NONE button at the top of the item list.

Moving/Copying/Deleting items

Items in the application can be moved or copied by selecting and dragging the item. In order to delete an item, select the item and drag it to the recycle folder.

Whether an item is moved or copied is determined by the source and destination of the drag. The following table shows this relationship:

Collections

	To	Detector	All	File	Recycle	GeoHunt	User Collection
From							
Detector		Copy ¹	N/A	Copy	Delete	N/A	Copy
All		Copy	N/A	Copy	Move	N/A	Move
File		Copy	N/A	N/A	Delete	N/A	Copy
Recycle		Copy	N/A	Delete	N/A	N/A	Move
GeoHunt		Copy	N/A	Copy	Move	N/A	Move
User Collection		Copy	N/A	Copy	Move	N/A	Move

1. Assume two detectors are connected.

Edit Items

1. Click the Edit Item icon on the right of the summary box to display the editor.
2. Make the required changes and click SAVE.

List Summary



Sort Items

Items can be sorted according to:

- Date
- Name
- Type
- Latitude
- Distance from the center

After a sort option has been selected click on the button next to the drop-down menu to select sort order. Options are 'ascending' or 'descending'.

Filter Items (Search Bar)

You can filter the list to only show items with specific text in the name or description by entering that text in the filter bar. The application will automatically remove any items that do not contain the specified text.

Filter Items Advanced

The item list can also be filtered by Type, Sync Status or Date by clicking on the magnifying glass icon to the right of the filter search bar. There is also an option to only show map items (WayPoints, FindPoints and GeoHunts).

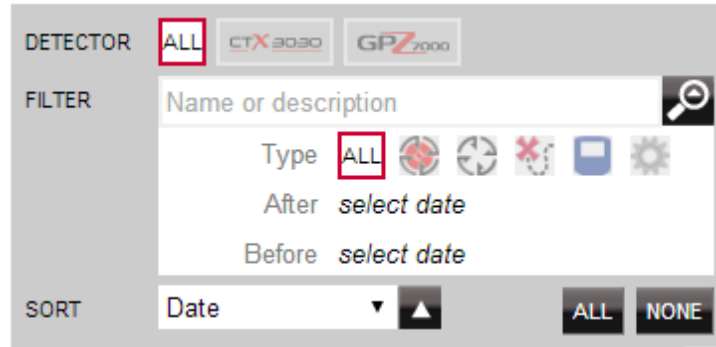
Select Type to limit the list to only that item type.

Collections

'New points' will only show when the Detector or File collections are selected and allows you to see only items that have not been copied to the application.

You can also click on Select Date to choose the dates you want included.

Select 'Detector Type' to only show items from a specific detector.



Closing the advanced filter will clear any advanced settings previously selected.

Using XChange 2

Using XChange 2

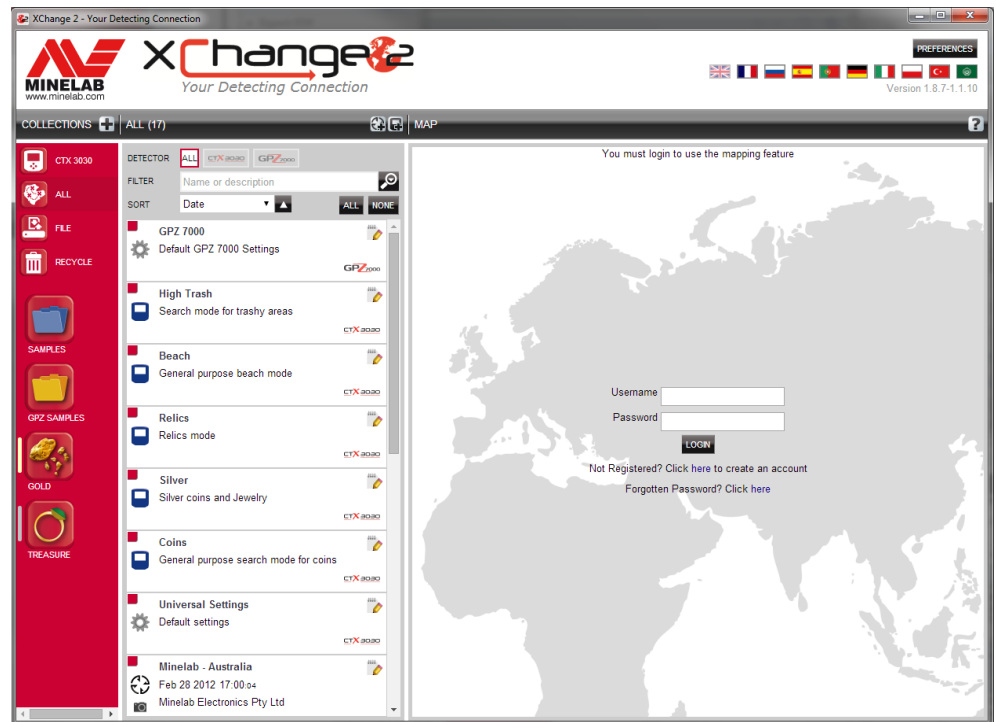
Logging In

The application can be used without logging on but mapping features will not be available for use.

If you already have a minelab.com account then you should use your existing Username and Password to login to the XChange 2 application.

If you do not have a minelab.com account create an account using the link provided or go to <http://www.minelab.com/> and follow the instructions to create an account.

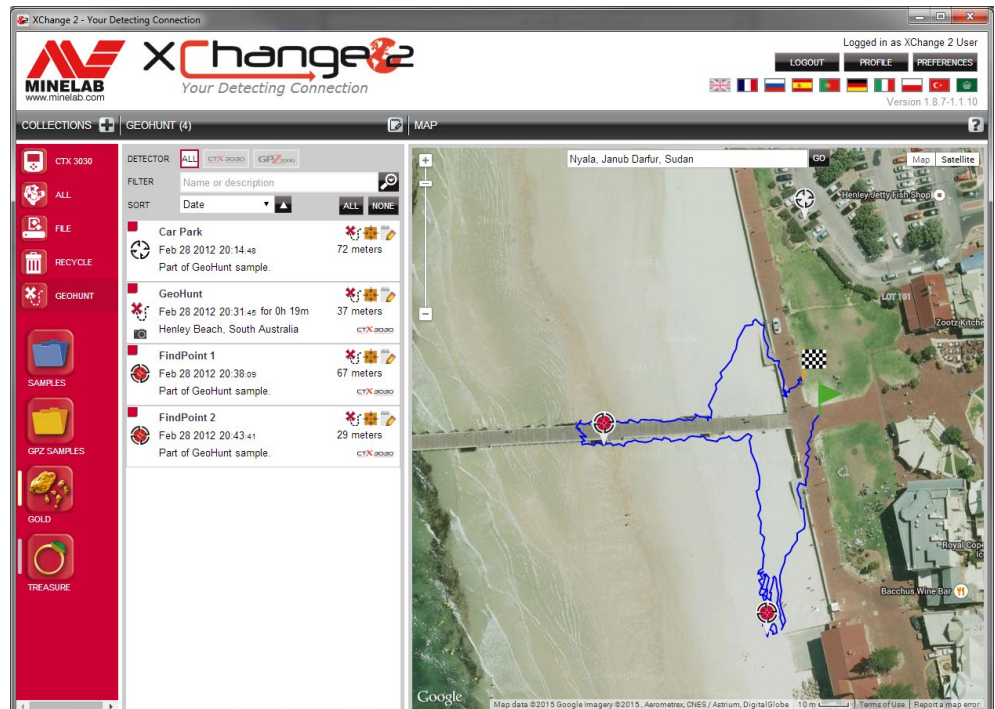
Enter your 'minelab.com' username and password into the XChange 2 application and click Login.



Once you have successfully logged into XChange 2 the mapping features will become available and you will be presented with a satellite map screen.

An example of the satellite map screen is provided on the next page.

Using XChange 2



Connecting your Detector

Connect your Minelab detector to your computer using the USB cable provided. Once plugged in, the XChange 2 application will automatically recognize your detector.



Once your detector is successfully connected, the detector icon will display within the 'Special Collections' section of the XChange 2 application.

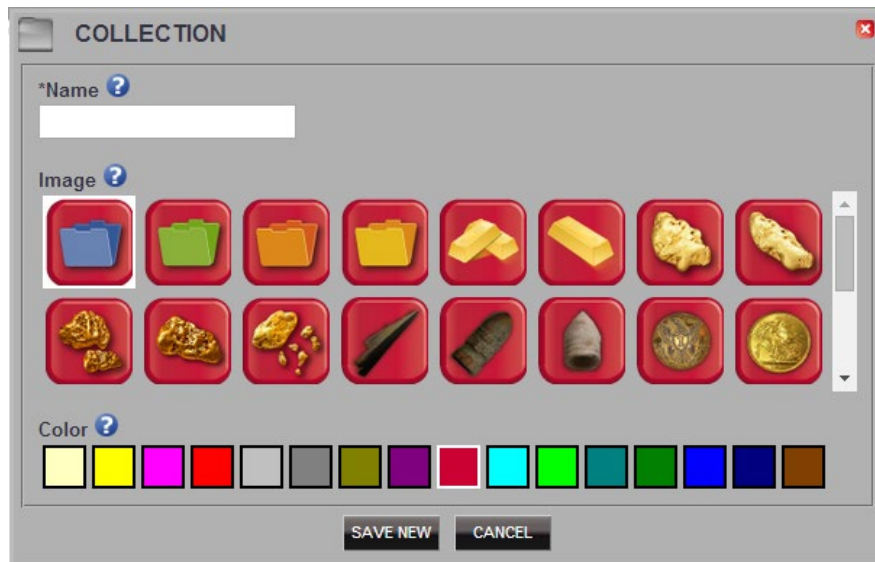
Clicking on this icon will allow you to view the contents of your detector.

Using XChange 2

Collections

Creating a Collection

1. Click the '+' next to Collections on the collection controls.
The Collection screen will be displayed.



2. Enter a name and select an image for the collection, and then click SAVE.
The newly created collection will appear in User Collections.

Editing a Collection

1. Select the collection and click on the Edit Collection button on the List Summary next to the collection name.



2. Change the details of the collection and click SAVE.

Using XChange 2

GeoHunt

Creating a GeoHunt

GeoHunts are created on the detector and cannot be created by the application. Refer to the detector Instruction Manual provided on the CD for instructions on how to create a GeoHunt.

Editing a GeoHunt

1. Click on the Edit button in the GeoHunt Item Summary; or
Click on the GeoHunt icon on the map and then click on the Edit link on the information box displayed.
The GeoHunt editor will appear.
2. Edit the GeoHunt details to your requirements, add an image if required, and click SAVE.

EDIT GEOHUNT

Details

*Name ?
Geohunt sample

Start ?
Feb 28 2012 8:31:45 PM

End ?
Feb 28 2012 8:50:45 PM

Description ?
Henley Beach, South Australia

User Mode

Snapshot ?
Coins

Position

Start Latitude ?
-34.919669

Start Longitude ?
138.493500

End Latitude ?
-34.919569

End Longitude ?
138.493444

Add Images

Choose File

Saved Images

VIEW
DELETE

LOT 101 Seaview Rd, Henley Beach SA 5022, Australia

Google 100 m 200 ft Map Data Terms of Use


SAVE

Your screen may vary depending on which detector model was used to capture the data.

Using XChange 2

WayPoint

Creating a WayPoint

1. Click on the  button in the Collection Controls; or Drag the WayPoint icon onto the map.



If you don't currently have a user collection selected, you will be asked to select one for the WayPoint.



2. Choose a collection in which to insert the WayPoint and click OK.
The WayPoint editor will be displayed.
3. Enter the details for the WayPoint and click SAVE.

Using XChange 2

Editing a WayPoint

1. Click on the Edit button in the WayPoint Item Summary; or
Click on the WayPoint icon on the map and then on the Edit link on the information box displayed.
The WayPoint editor will be displayed.
2. Edit the WayPoint details to your requirements, add an image if required, and click SAVE.

EDIT WAYPOINT

Details

*Name ?
Minelab - Australia

Timestamp ?
Feb 28 2012 5:00:04 PM

Description ?
Minelab Electronics Pty Ltd
Tel +61 (0)8 8238 0888
minelab@minelab.com.au
Australia
New Zealand
China
Asia
Indian Subcontinent

Position

*Latitude ?
-34.911710
-34.911710

*Longitude ?
138.556606
138.556606

118 Hayward Ave, Torrensville SA
5031, Australia

Add Images

Choose File

Saved Images

VIEW
DELETE

SAVE

Using XChange 2

FindPoint

FindPoints are created on the detector and cannot be created by the application. Refer to the CTX 3030 Instruction Manual supplied on the CD for details on how to create a FindPoint.

Editing a FindPoint

1. Click on the Edit button on the FindPoint Summary; or
Click on the FindPoint icon on the map.
The FindPoint editor will be displayed.
2. Edit the FindPoint details to your requirements, add an image if required, and click SAVE.

EDIT FINDPOINT

Details

*Name ?
GeoHunt FindPoint 1

Timestamp ?
Feb 28 2012 8:38:09 PM

Description ?
Jewelry, non-precious

Position

*Latitude ?
-34.920285
-34.920285

*Longitude ?
138.493322
138.493322

Target

Conductivity ? 15

Ferrous ? 12

Depth ? 5 Cm

User Mode

Snapshot ?
Coins

LOT 1650 Esplanade, Henley Beach SA 5022, Australia

5 m
20 ft

Map Data - Terms of Use

Choose File

Saved Images

VIEW
DELETE

SAVE

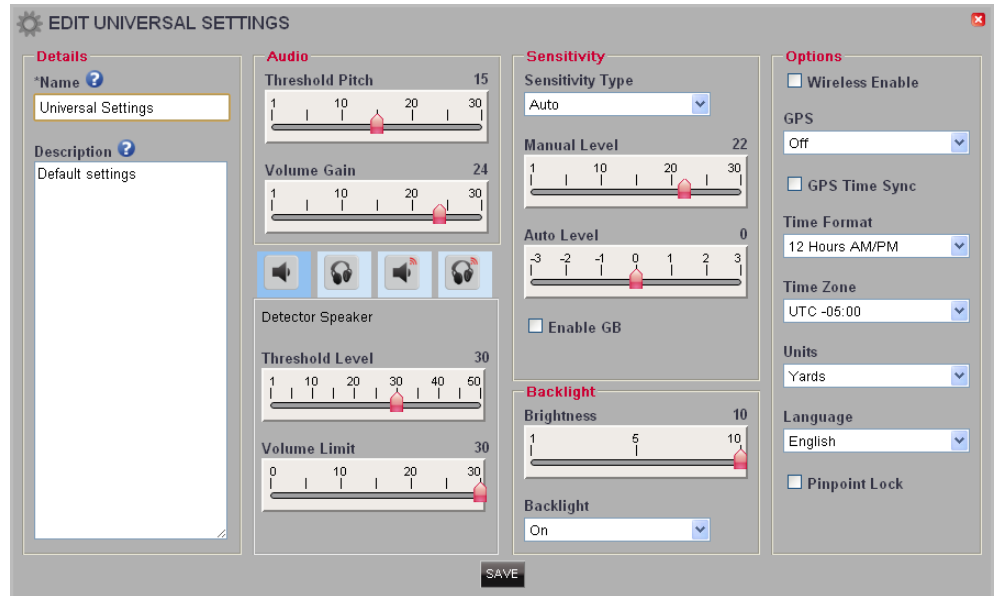
Your screen may vary depending which detector model was used to capture the data.

Using XChange 2

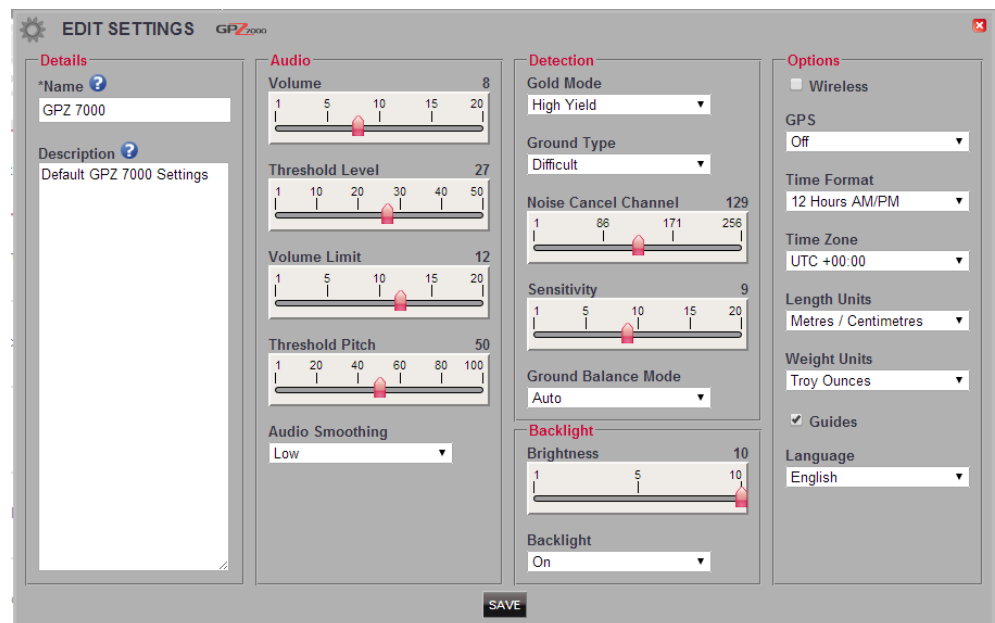
Detector Settings

Editing Detector Settings

1. Click on the Edit Item button in the Universal Settings Item Summary. The Universal Settings editor will be displayed.
2. Edit the settings to your requirements and click SAVE.



CTX 3030 Universal Settings




GPZ 7000 Settings

Using XChange 2

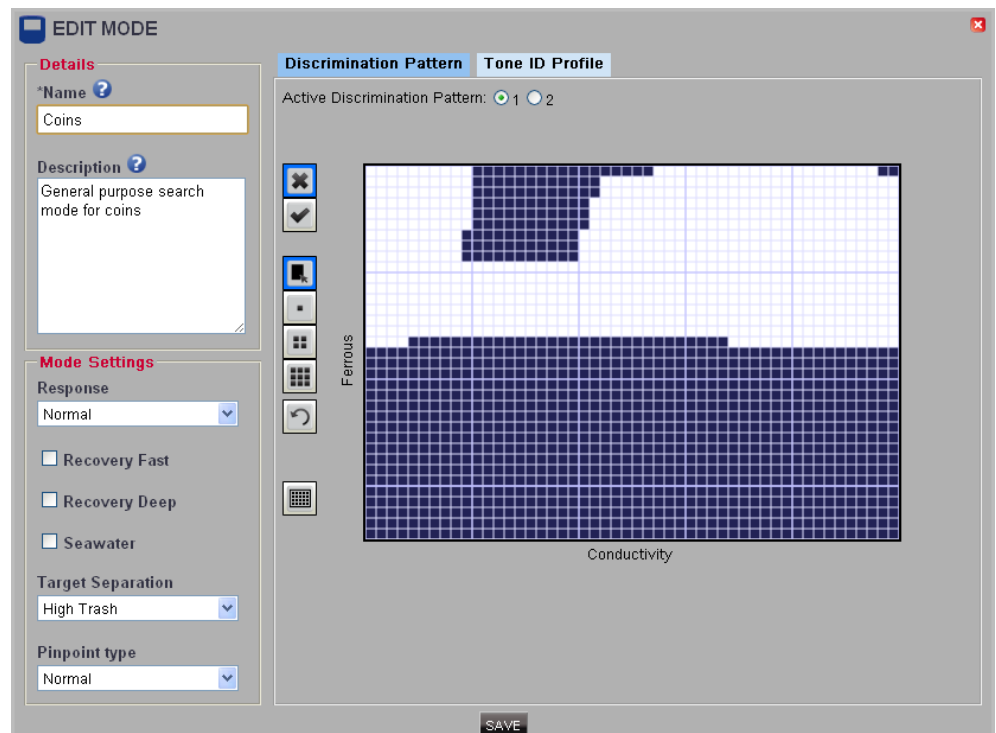
User Mode (CTX 3030 only)

Creating a User Mode



1. Click on the  in the Collection Controls.
The User Mode editor will be displayed.
2. Type a name for your mode into the Name field and click SAVE.
NOTE: The User Mode MUST be given a name before it can be saved.

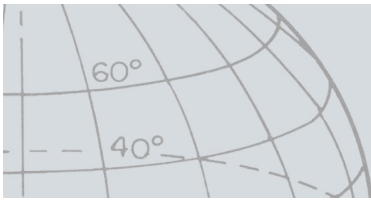
Editing a User Mode

Each User Mode has two Discrimination Patterns and a Tone ID Map. Each of these can be edited by selecting the relevant tab in the User Mode editor.



Editing the Discrimination Patterns

1. Select the Discrimination Pattern tab to view the current pattern.
2. Click option 1 or 2 next to Active Discrimination Pattern to select the pattern you wish to edit.
3. Use the controls on the left to select mask  or active  and area fill, or a brush size.
4. Drag the mouse over the pattern area to draw the required pattern.



Using XChange 2

Editing the Tone ID Profile

1. Select the Tone ID Profile tab to view the current profile.

NOTE: The Tone ID Profile is overlaid on the currently active Discrimination Pattern.

2. Select the required Profile Type from the drop-down list and drag the lines to the required position.
3. Change the tone pitch by selecting the required zone and using the slider to select the pitch.

A visual indication of the pitch is shown by the level of grey in the active area.

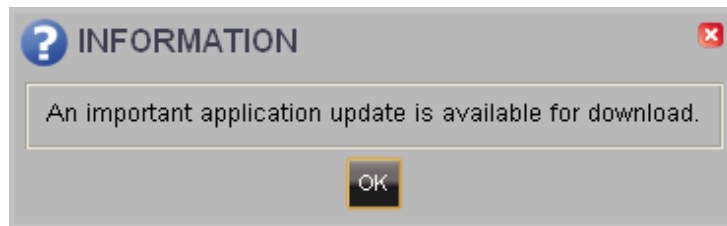
Software Updates

Software Updates

XChange 2 has an in-built software update feature. When connected to the internet, XChange 2 will check if there are any software updates available for the detectors or WM 12 modules that are plugged into the PC. A check will also be made for updates to the XChange 2 application.

If an update is found, the application will inform the user as follows:

- If the update is important the application presents the user with the following notification:



- If an update is available but not essential, the download link is displayed and no other notification is given. The download link is located at the top of the screen.



Update Available

To install the update, click on the notification and select the item to update.